

# OPSÆTNING AF MAGICAD

## INDHOLD

Installation af MagiCAD.....	1
Aktivering af MagiCAD.....	6

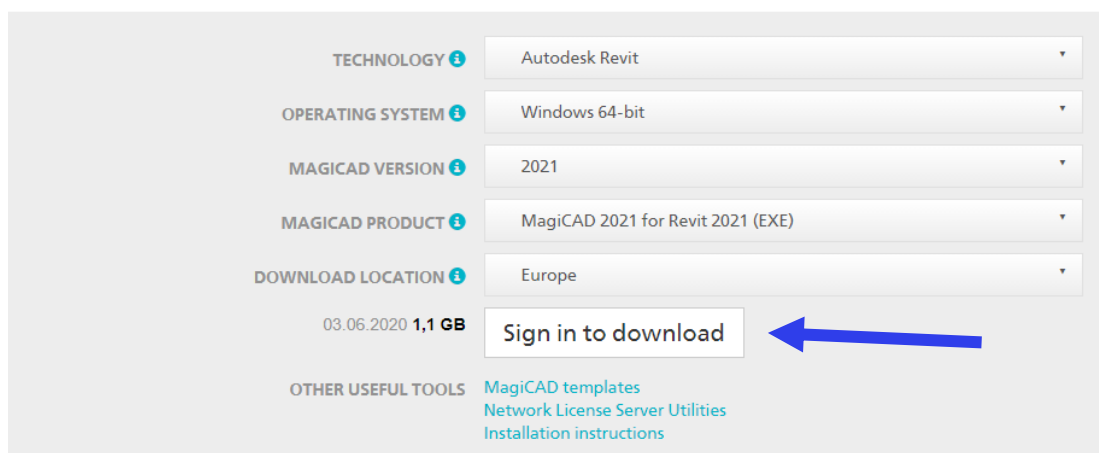
## INSTALLATION AF MAGICAD

1. Via din webbrowser (Chrome, Internet Explorer eller andet) gå til hjemmesiden:  
<https://portal.magicad.com/Download/GetProductCategoryList?categoryId=1>

**Husk at vælge Autodesk Revit under Technology (som default er den sat til Autodesk AutoCAD).**

### Download MagiCAD

Welcome to the MagiCAD download page. To download MagiCAD installation package, define Autodesk technology and operating system, select the MagiCAD version, download site, MagiCAD product and sign in to begin download.



The screenshot shows a web form with the following fields:

- TECHNOLOGY: Autodesk Revit
- OPERATING SYSTEM: Windows 64-bit
- MAGICAD VERSION: 2021
- MAGICAD PRODUCT: MagiCAD 2021 for Revit 2021 (EXE)
- DOWNLOAD LOCATION: Europe

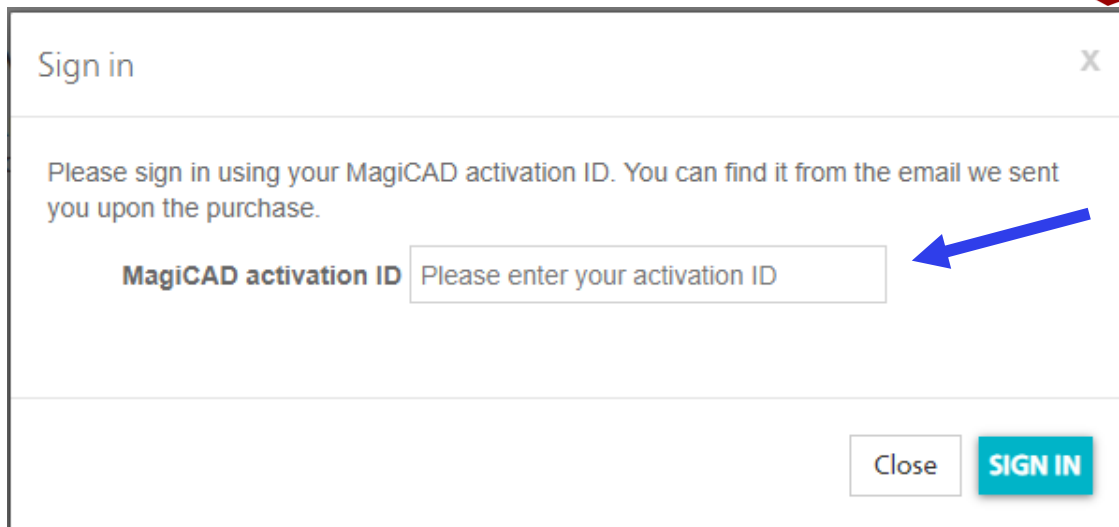
Below the fields, it displays the date '03.06.2020' and the size '1,1 GB'. A button labeled 'Sign in to download' is highlighted with a blue arrow pointing to it from the right.

At the bottom, there are links for 'OTHER USEFUL TOOLS':  
[MagiCAD templates](#)  
[Network License Server Utilities](#)  
[Installation instructions](#)

Klik på Sign in to download.

2. Angiv MagiCad activation ID:  
**Act-accebec1-c5e6-46d4-bae0-fec55408b9c9-0**

og klik på Sign in.



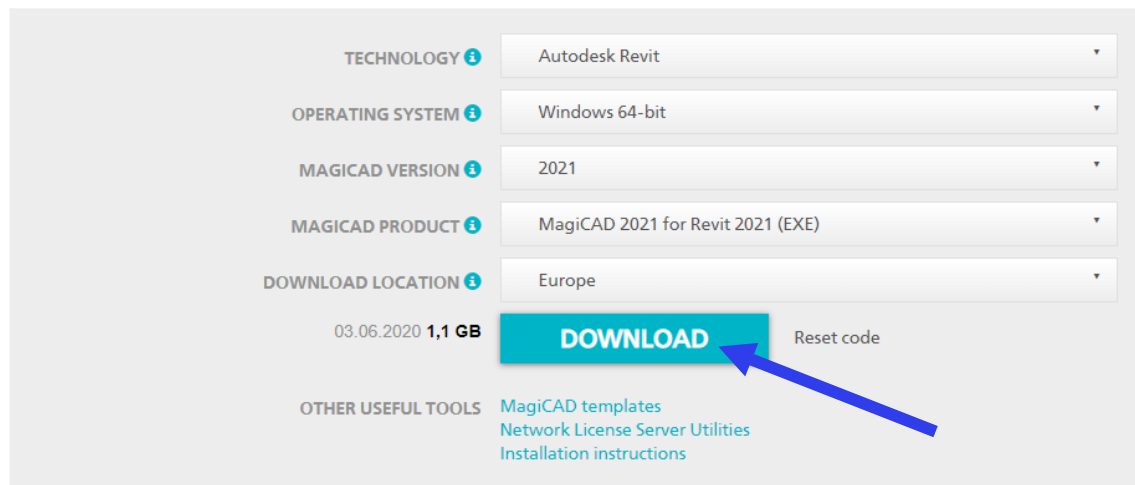
3. Efter login så ser du dette billede.

**Vælg Autodesk Revit i Technology (som default den er sat til Autodesk AutoCAD).**

Tryk på Download.

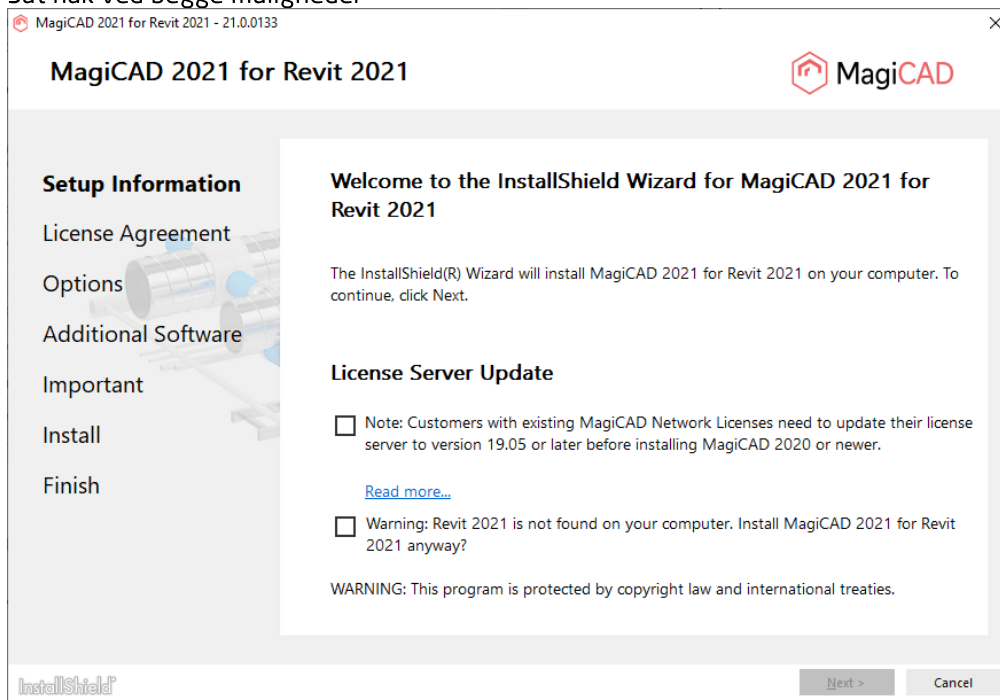
## Download MagiCAD

Welcome to the MagiCAD download page. To download MagiCAD installation package, define Autodesk technology and operating system, select the MagiCAD version, download site, MagiCAD product and sign in to begin download.

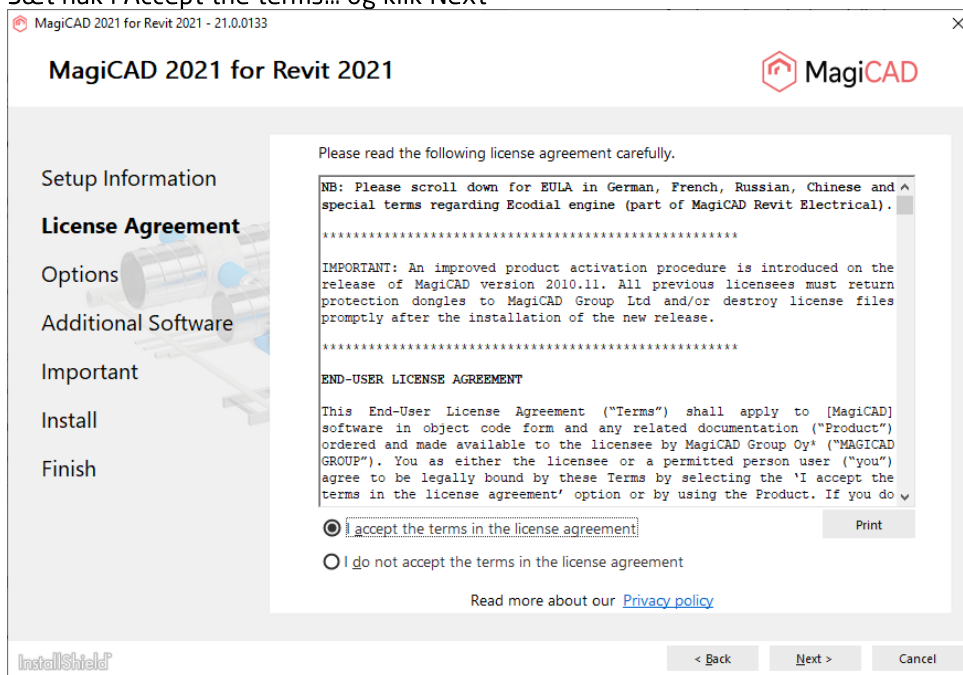


4. Download zip-filen, pak filen ud og installer (dobbeltklik på [MagiCAD 2021 for Revit 2021.exe](#), der hvor du har udpakket filen). Hvordan du udpakker filer afhænger af hvilket program, du anvender til zip-filer. (alle studerende burde vide hvordan man gør).

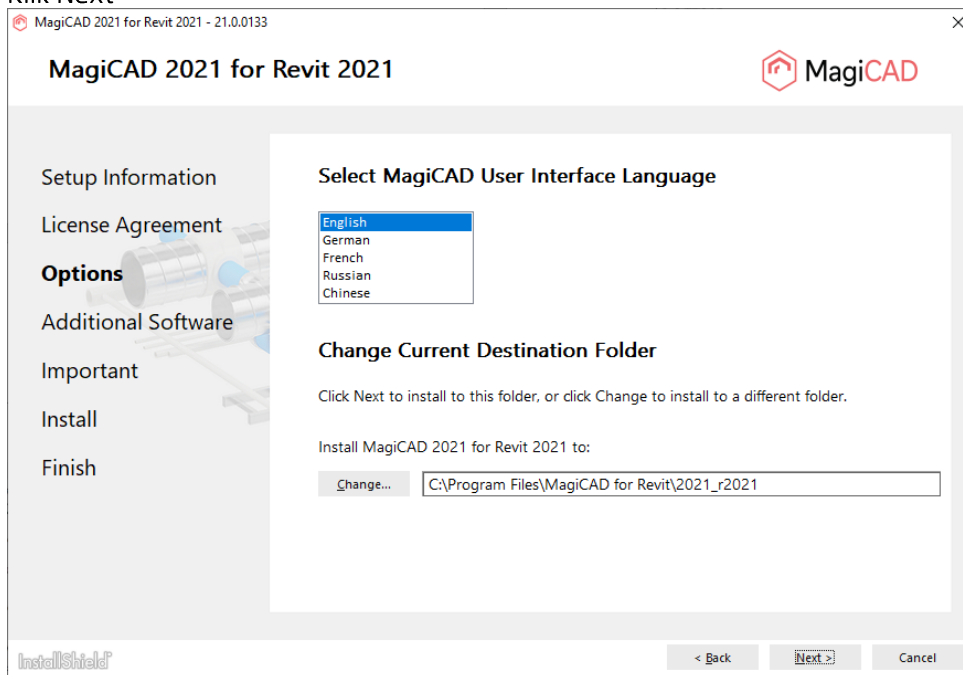
5. Sæt hak ved begge muligheder



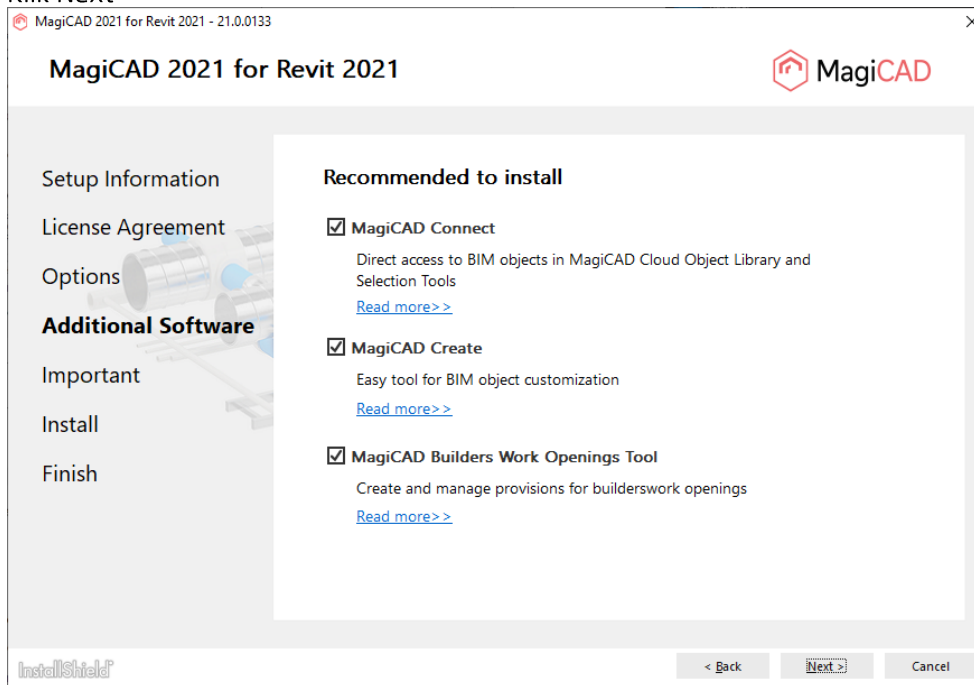
6. Sæt hak i Accept the terms... og klik Next



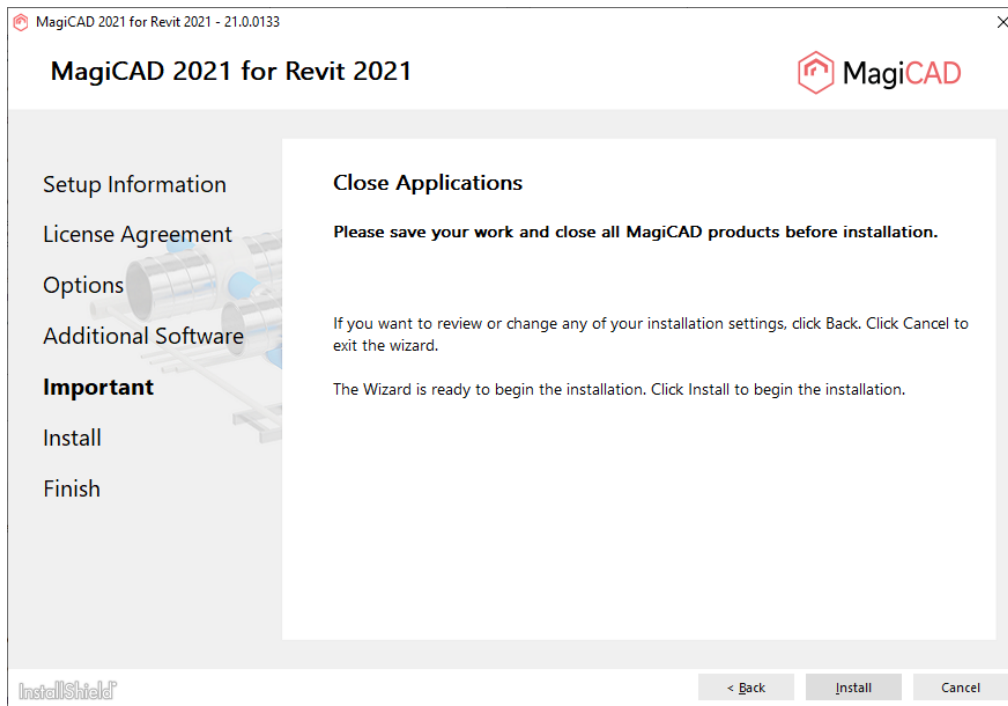
7. Klik Next



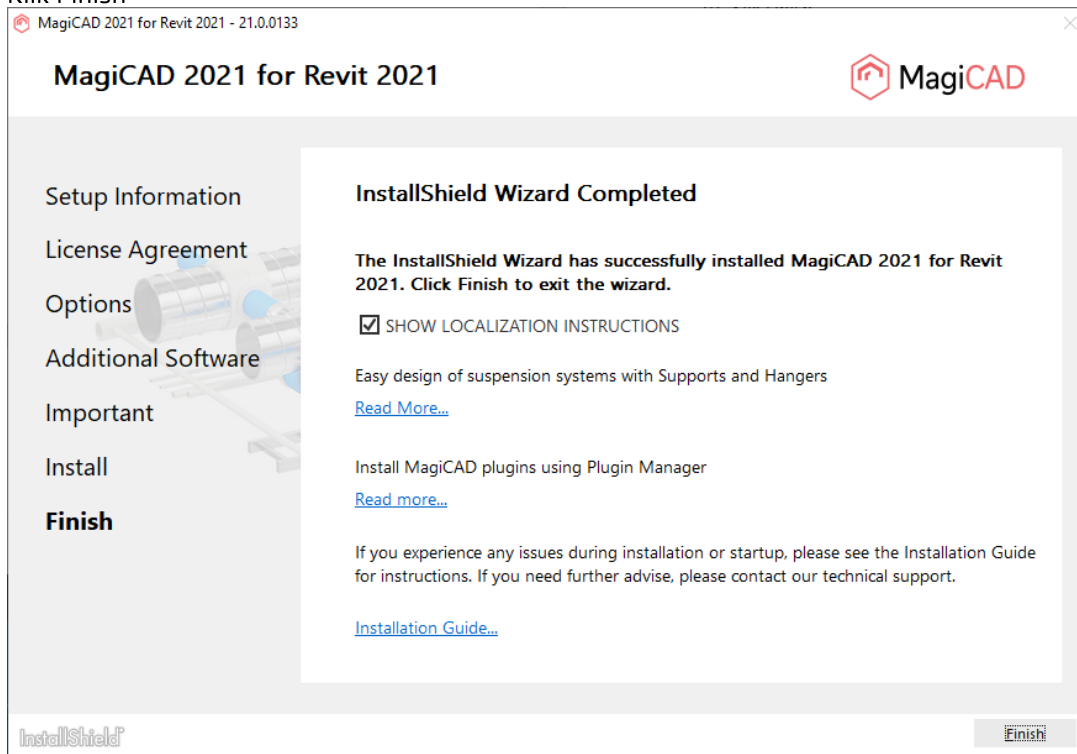
8. Klik Next



9. Klik Install

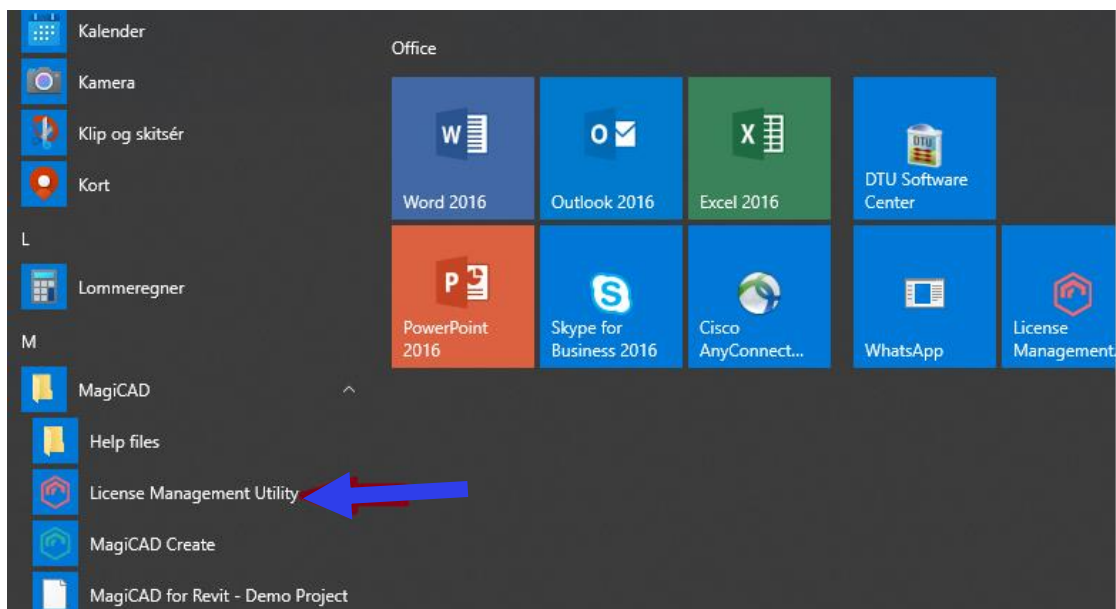


## 10. Klik Finish

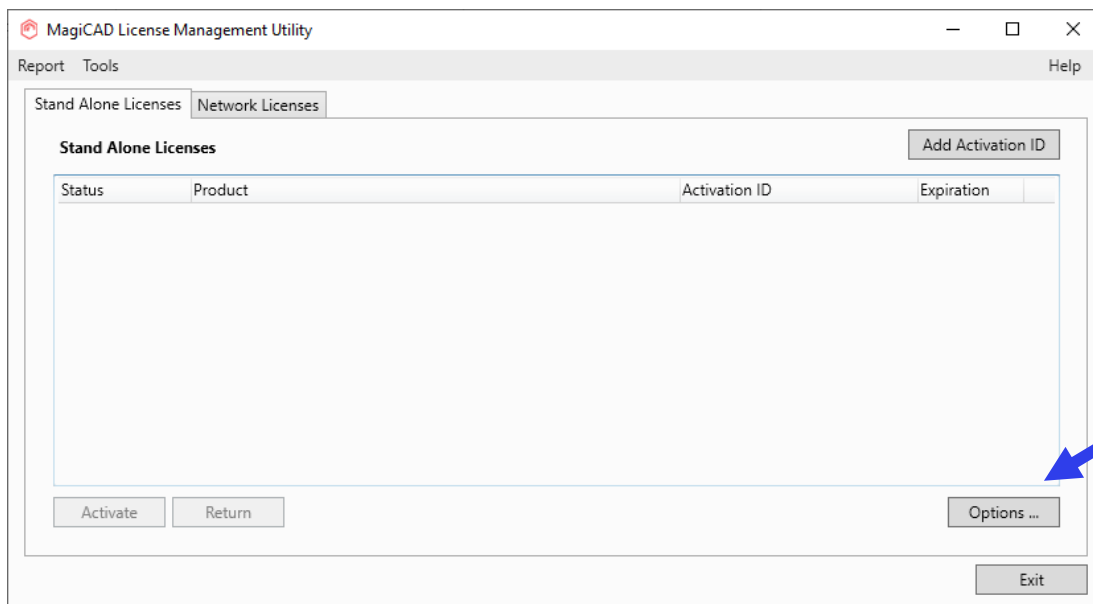


## AKTIVERING AF MAGICAD

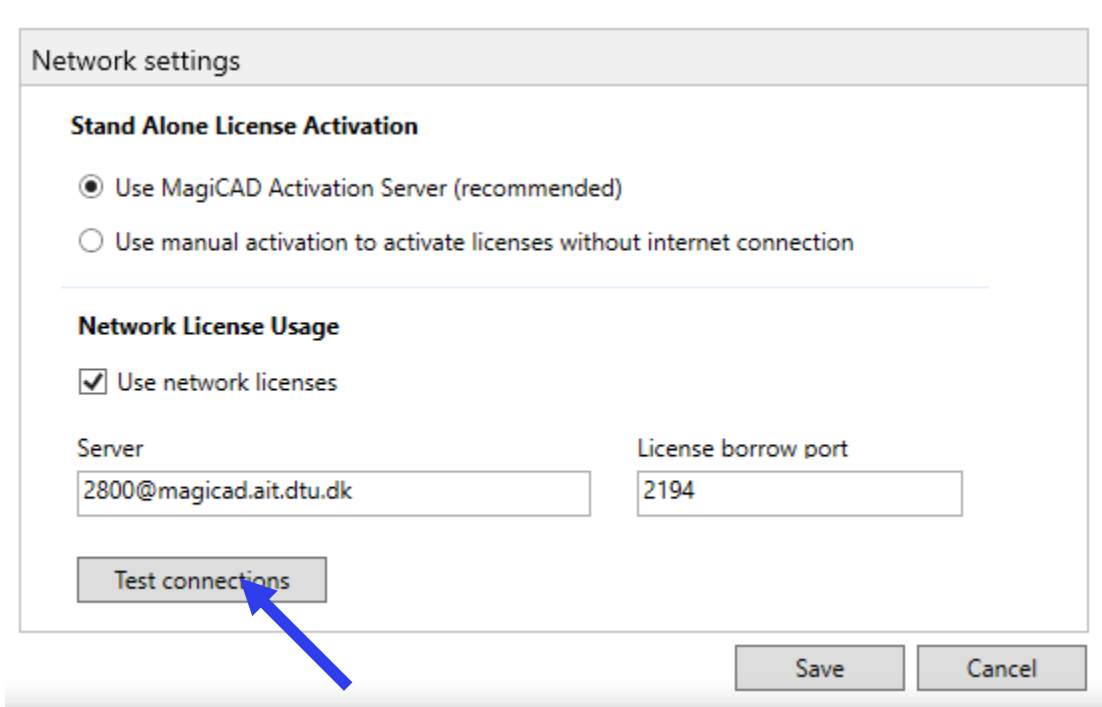
11. Efter installation dukker Magicad mappen op i Start Menu.  
Åbn License Management Utility



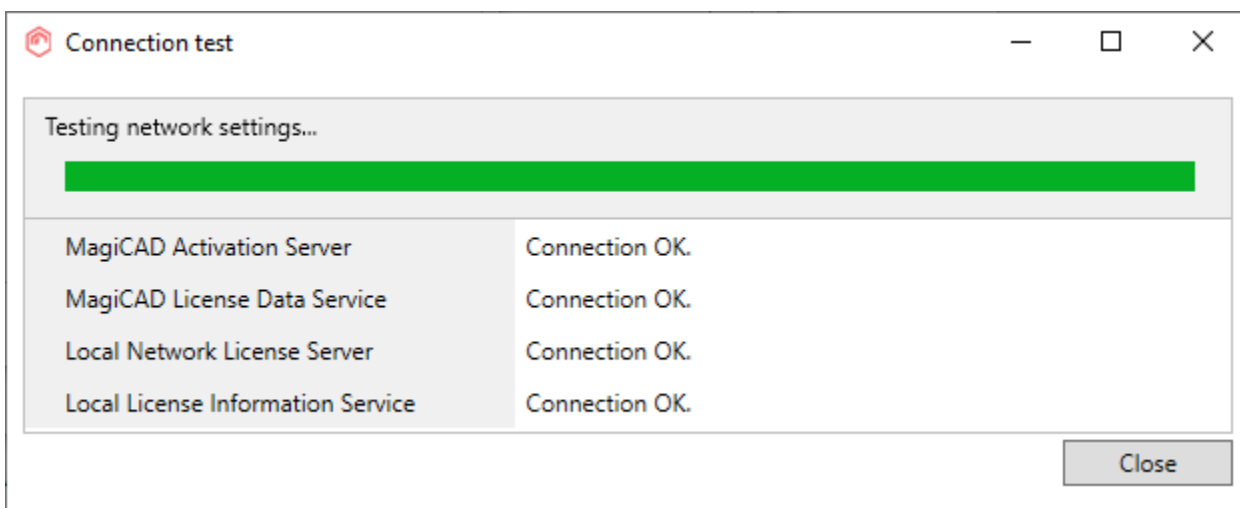
12. Vælg Options



13. Skriv [2800@magicad.ait.dtu.dk](mailto:2800@magicad.ait.dtu.dk) i Server og 2194 i License borrow port  
Klik på Test connections.



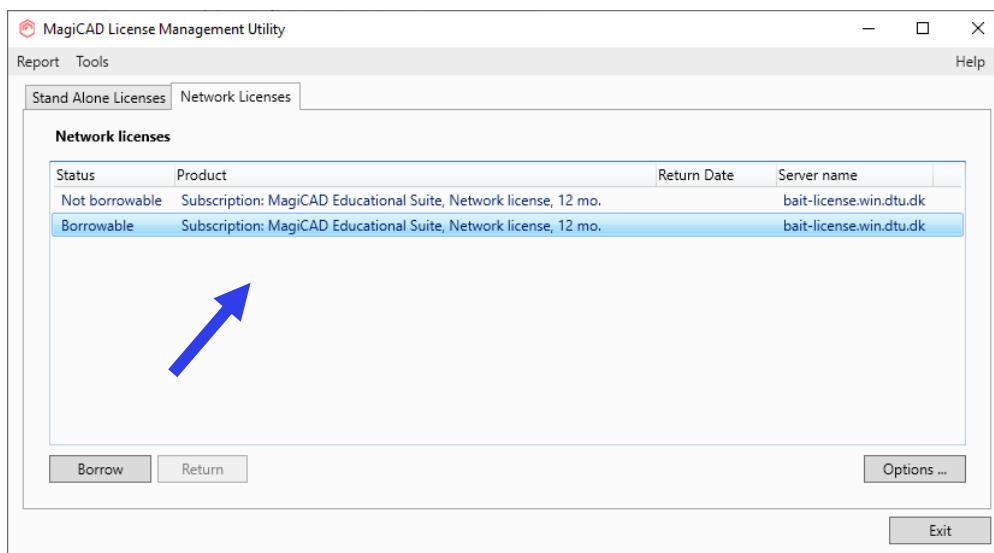
14. Connection OK viser 4 gange, tryk på Close.



15. Tryk på Save

16. Klik på faneblad Networks Licenses

Vælg den sidste Subscription (borrowable). Herunder er en eksempel på et udlån af MagiCad licens.



17. Klik på Borrow

Vælg 30 dage frem

Licens er nu vist en dato som vist på billedet.

Klik på Exit



